

Wickham Parish Council

Minutes of an extraordinary meeting of the above Council held at Wickham Centre on Tuesday 27th October 2009 at 6.30pm.

Present: Angela Clear (Chairman), Sue Roger-Jones (Vice- Chairman), Trevor Astbury, Mike Bennett, Mike Carter, Di Frost, Justin Gamblin, Jenny Hollis, Colin Roke.

11 members of the public including members of 1st Wickham Scouts executive committee, Parish Clerk Nicki Oliver

- 1. To receive apologies for absence** Thérèse Evans
- 2. To receive declarations of interest regarding agenda items:** Sue Roger-Jones declared a personal and prejudicial interest in items referring to material changes to the recreation ground as a relative owns property adjoining the land. Cllr Roger-Jones left the meeting after the public session and did not vote. Angela Clear declared a personal interest in the recreation ground as a resident of Manor Close.
- 3. To adjourn meeting to allow participation by members of the public** A member of the public spoke in favour of prioritising the MUGA. A member of the public and the Chairman of the Scout executive spoke in favour of the Scout HQ. Cllr Hollis asked questions regarding cost of sewer connection and foundation requirements, it was noted that detailed work required to respond to these questions has yet to be carried out.
- 4. To consider options for the siting of the Scout HQ on the recreation ground and agree site to be offered to Scouts.** Reports attached to agenda refer.

It was agreed that both the siting and proposed design be resolved during the meeting.

The Chairman proposed that the public be asked to withdraw to allow members to consider financial and other potentially confidential aspects of negotiations with the Scouts. **Resolved.**

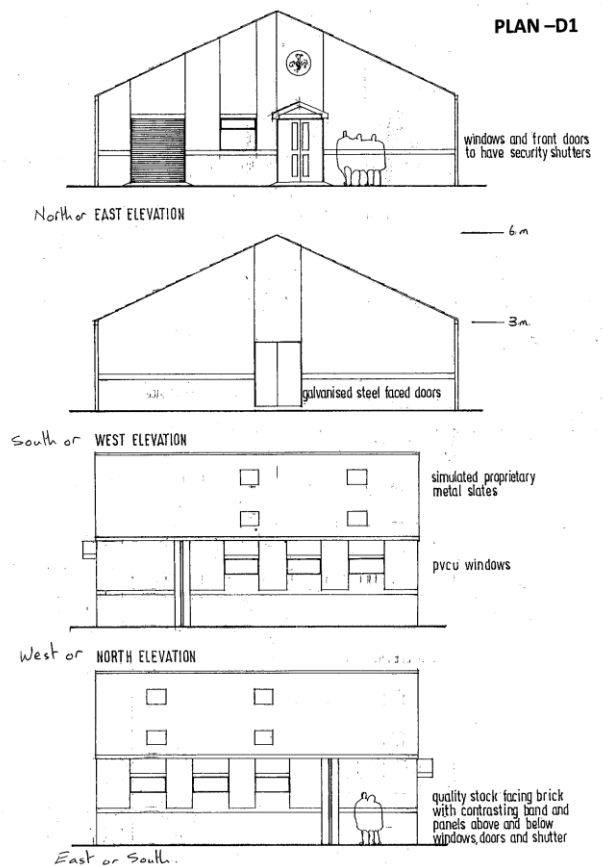
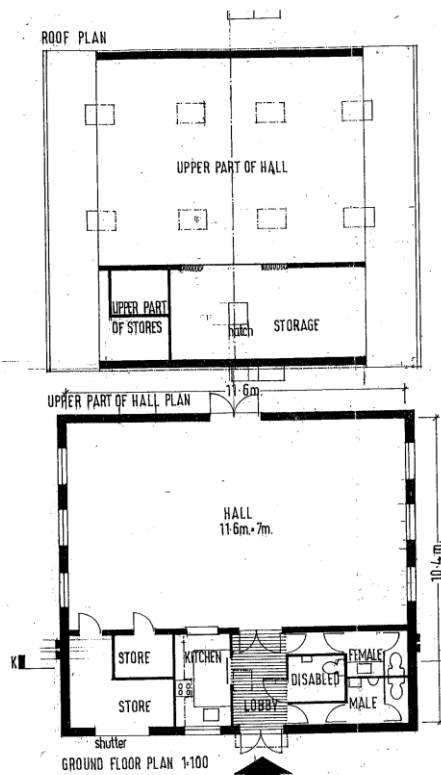
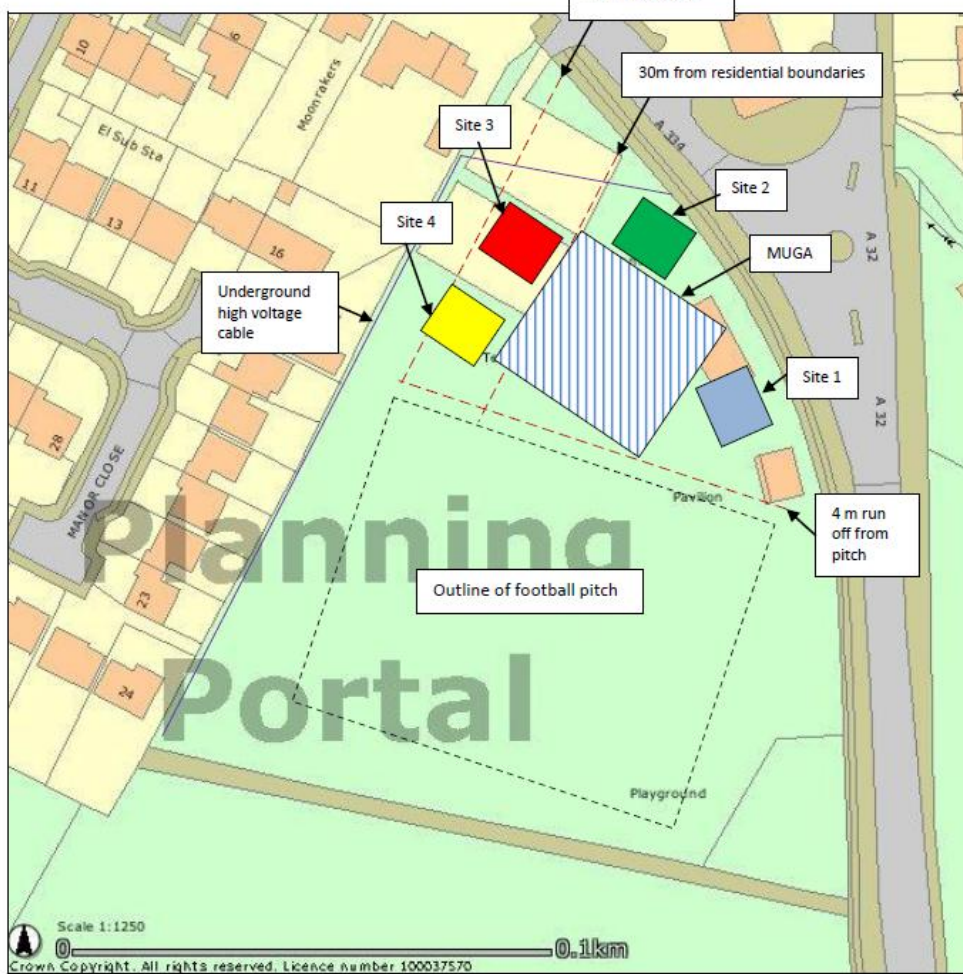
Following discussion the public were invited to return.

It was resolved that the Scouts be offered Site 4, to the south of the existing tennis court, and that the design should be D1.

Site 4 is the Scout's preferred site if the MUGA is built, the Scouts consider design D1 to be the cheapest to deliver.

The Chairman advised the Scouts that no guarantee of funding from the Parish Council could be made at this point.

It was agreed to commence work to prepare a new lease immediately. **Action Clerk.**



- 5. To consider request from WCC to contribute £3000 towards the running costs of the public conveniences. If funding is not agreed the conveniences will be closed from October until April when they will be reopened for the summer season. Request for funding is likely to be ongoing.**

An email from WCC Cllr Pearson dated 27th October has been received advising that contrary to his previous advice, the public conveniences will be permanently closed should the PC choose not to contribute towards the running costs.

Cllr Pearson agrees that the contribution required should be based on the tax base for the parish and not a fixed sum for each parish regardless of size. The email suggests this should be less than £2000 for the first year rather than the £3000 previously requested.

It was resolved to contribute towards the public conveniences on this basis.

Meeting closed 8.25pm

Signed.....

Date.....