

Wickham Parish Council News

December 2009

Councillor Vacancy

There is a vacancy for a Parish Councillor, please contact the Clerk if you are interested in standing for co-option.

Applicants need to be able to attend evening meetings and be willing to undertake training.

Applications for co-option will be considered at the Full Council meeting to be held on 18th January

Christmas light switch on



**6pm Wednesday
2nd December**

**Lantern processions 5.30pm
from the Community Centre**

A new home for Wickham Scouts



The Parish Council has agreed a new site on the recreation and a proposed building design for the replacement Scout HQ.

A number of options were discussed, councillors agreed to permit the Scout's preferred site and design options.

Wickham Festival 2010

A licence application for the Festival to return in 2010 has been made, the outcome is awaited.

Skatepark improvements



Join in the discussion and help with the grant application on Facebook .
Group name:
Extend Wickham Skatepark

Expert help with local community planning projects needed.

The Parish Council is working on some planning documents to secure the best outcomes for the village and its residents over the coming years and we need your help please!

The Village Design Statement the village already has a VDS but it needs revising to comply with the latest planning regulations.

This document describes the nature of the physical aspects of the built and natural environment, defining policies to protect and enhance important features and to set out guidance for the design of new development.

A Village Sports Development Plan this will set out a vision for the development of new sports facilities and the enhancement of existing provision to meet current and future aspirations for Wickham and Knowle.

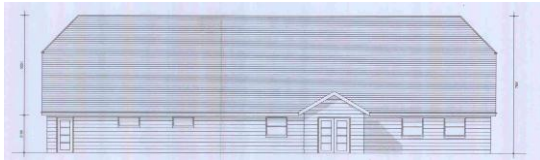


**A new pool
for Wickham
by 2020?**

Please contact the Clerk if you would like to assist with these projects.

Knowle

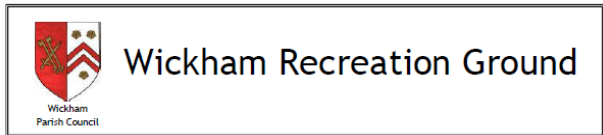
The Parish Council will be taking responsibility for the village green and play areas along with the community building at Knowle in due course, this will reduce the burden on the estate management contractor and resulting charges to residents. The building will be sublet to Knowle Community Buildings Association.



The Parish Council has fulfilled all its legal requirements to allow work to start on the new building but outstanding matters between Winchester City Council and Berkeley are still to be resolved. It is hoped work on the building will start soon.

The Council is also chasing the completion of the landscaping around the skatepark which is rightly causing concern for users.

A grant to support the development of the Knowle Post, a newsletter for residents, has been agreed by the Parish Council



Wickham Recreation Ground

Plans are afoot for the recreation ground!

The pavilion is looking great after its refurbishment and the Scouts are planning their new HQ which will be sited just beyond the tennis court.



Plans for a multi use games area are in hand to provide all weather football training facilities and two tennis courts. This will be sited between the existing tennis court and pavilion.

Do you want to get fitter and enjoy socialising at the same time?

Walks for Health

Every Thursday at 10.15am, meet in Bishops Waltham Square. Walks will last approximately an hour (2-3 miles) and are most suitable for those with low / no activity level. For more information contact Lydia Lockhart on 01962 848725

Many thanks to local walk leader Robert Goulson for assisting with this very worthwhile project

Parish Council Meetings

Held at Wickham Centre, all welcome to attend.

Full Council

7.15pm Monday 14th December
7.15pm Monday 18th January

Committees

7pm Monday 14th December if required
7pm Monday 11th January

Please see notice boards and website for agendas and dates and times of other meetings.

Best wishes for a merry Christmas from the Parish Council



Nicki Oliver Parish Clerk Heatherdene, Turkey Island, Shedfield, Southampton SO32 2JE tel 01329 835019 Email clerk.wickham@parish.hants.gov.uk

